

HIGH DENSITY POLYETHYLENE

PINTYPE INSULATOR

CAT. NO. VIP 15F

F-NECK 1" PINHOLE

CLASS 55-4 EQUIVALENT

DIMENSIONS

LEAKAGE DISTANCE IN 11 ³/₄

MECHANICAL VALUES

CANTILEVER STRENGTH LB 3,000

ELECTRICAL VALUES

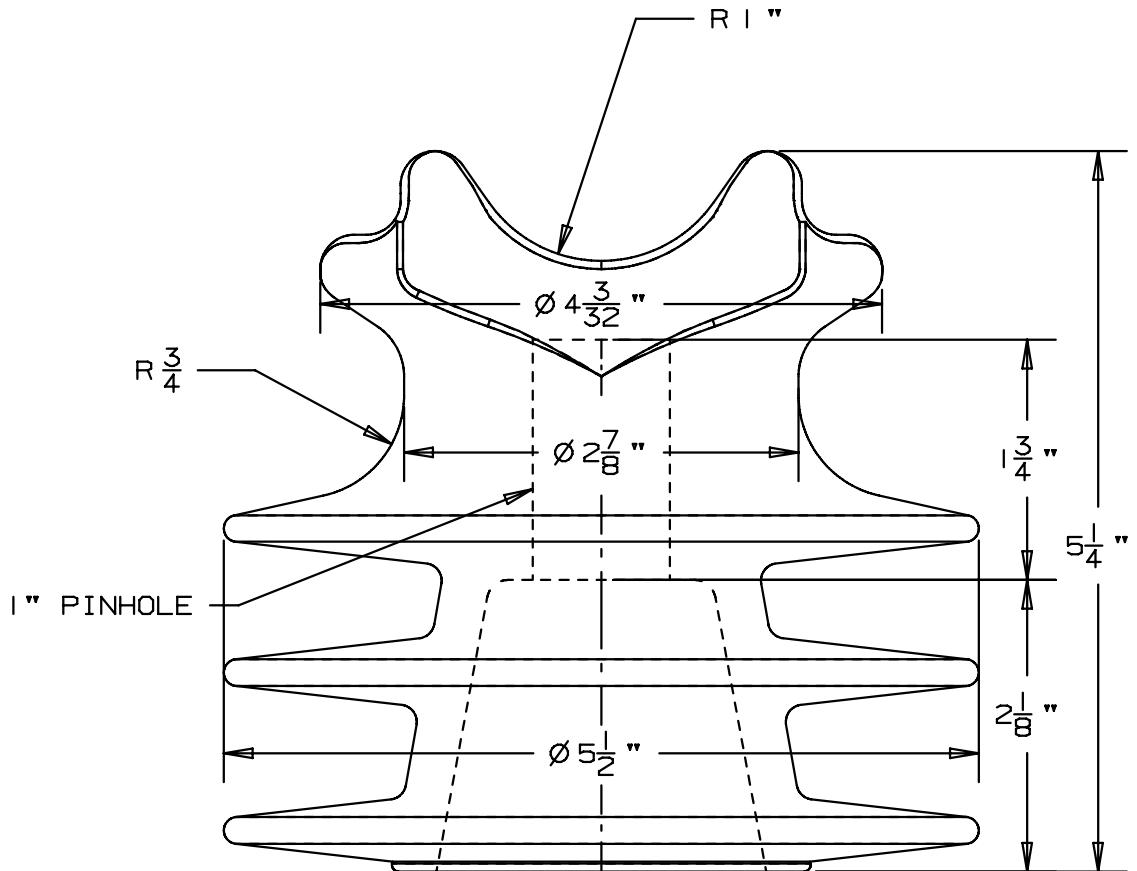
60 HERTZ FLASHOVER-DRY kV 80
 60 HERTZ FLASHOVER-WET kV 46
 IMPULSE FLASHOVER-POS kV 122
 IMPULSE FLASHOVER-NEG kV 202
 60 HERTZ PUNCTURE VOLTAGE kV 215

RADIO INFLUENCE VOLTAGE DATA

60 HERTZ TEST VOLTAGE TO GRD. kV 10
 MAXIMUM RIV @ 1000 kHz μ V 50

PACKING INFORMATION

NET WEIGHT , PER 100 LB 125
 PACKED WEIGHT , PER 100 LB 145
 NO. IN STANDARD PACKAGE 18



THIS DRAWING IS THE PROPERTY OF VICTOR INSULATORS, INC. AND CONTAINS PROPRIETARY AND CONFIDENTIAL INFORMATION WHICH MUST NOT BE DUPLICATED, USED, OR DISCLOSED OTHER THAN AS EXPRESSLY AUTHORIZED BY VICTOR INSULATORS, INC.

- 1 ENG. MGR
- 2 ENG
- PURCH.
- 1 MKTG.
- PLT. MGR.
- COST
- PROD.
- INSP
- GLAZE
- BUSHING
- MAKING
- SHIP
- ASSEM
- MODEL
- MACH.
- 45
- TOOLING
- CER LAB
- 1 EL LAB
- 1 E.MEDIA



Victor Insulators, Inc.

280 MAPLE AVENUE
 VICTOR, NEW YORK 14564
 TELEPHONE: (585)924-2127

VIP 15F

02-29-08

TM